



浙江爱铂安防科技有限公司

ZHEJIANG AIBO SECURITY-TECHNOLOGY CO.,LTD

为客户提供优质的服务及解决方案；为员工  
创造一个良好的学习，工作，生活的环境

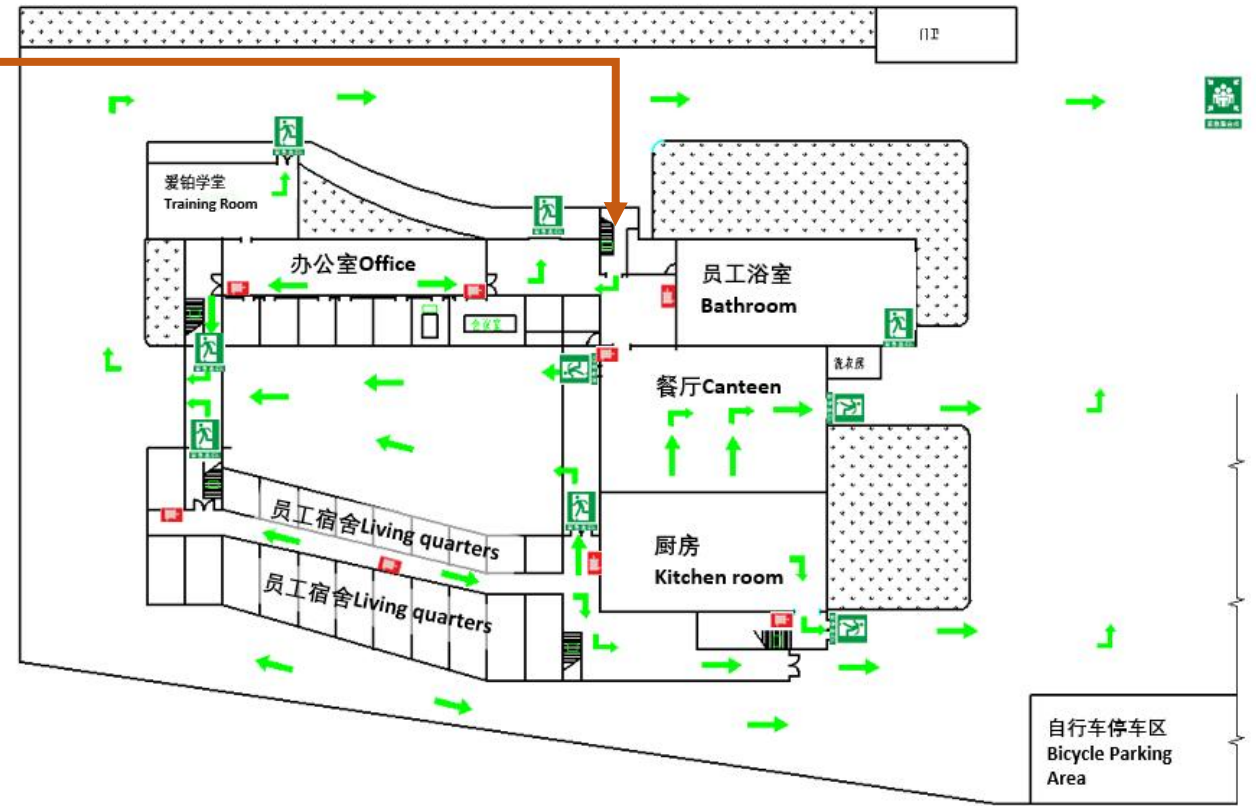
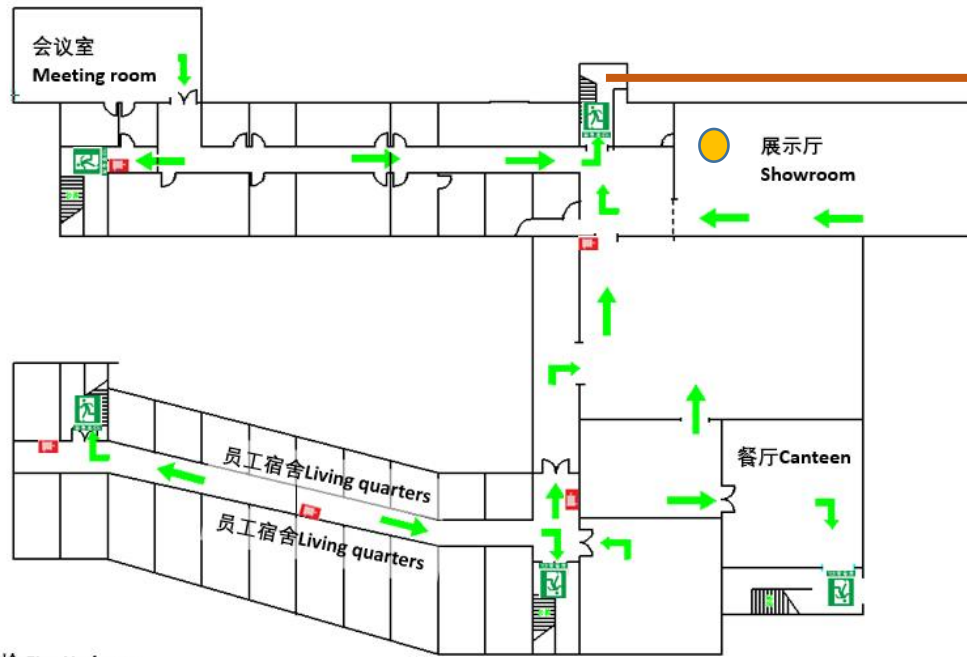
Provide customers with high-quality services and  
solutions, Create a good learning, working, and living  
environment for our employees.

## Aibo Introduction

- 安全 Safety
- 爱铂介绍 Introduction of Aibo
- 工艺过程 Process Flow of manufacturing
- 质量管控 & 实验室 Quality Control & Laboratory
- 爱铂产品 Aibo Products

## 二楼办公室逃生图 2nd Floor Evacuation Route Map


## 一楼办公室逃生图 1st Floor Evacuation Route Map





 消防栓 Fire Hydrant

 灭火器 Fire Extinguisher

 紧急集合点 Evacuation Assembly Point

 紧急疏散路线方向 Escape Route

 紧急疏散路线方向 Escape Route

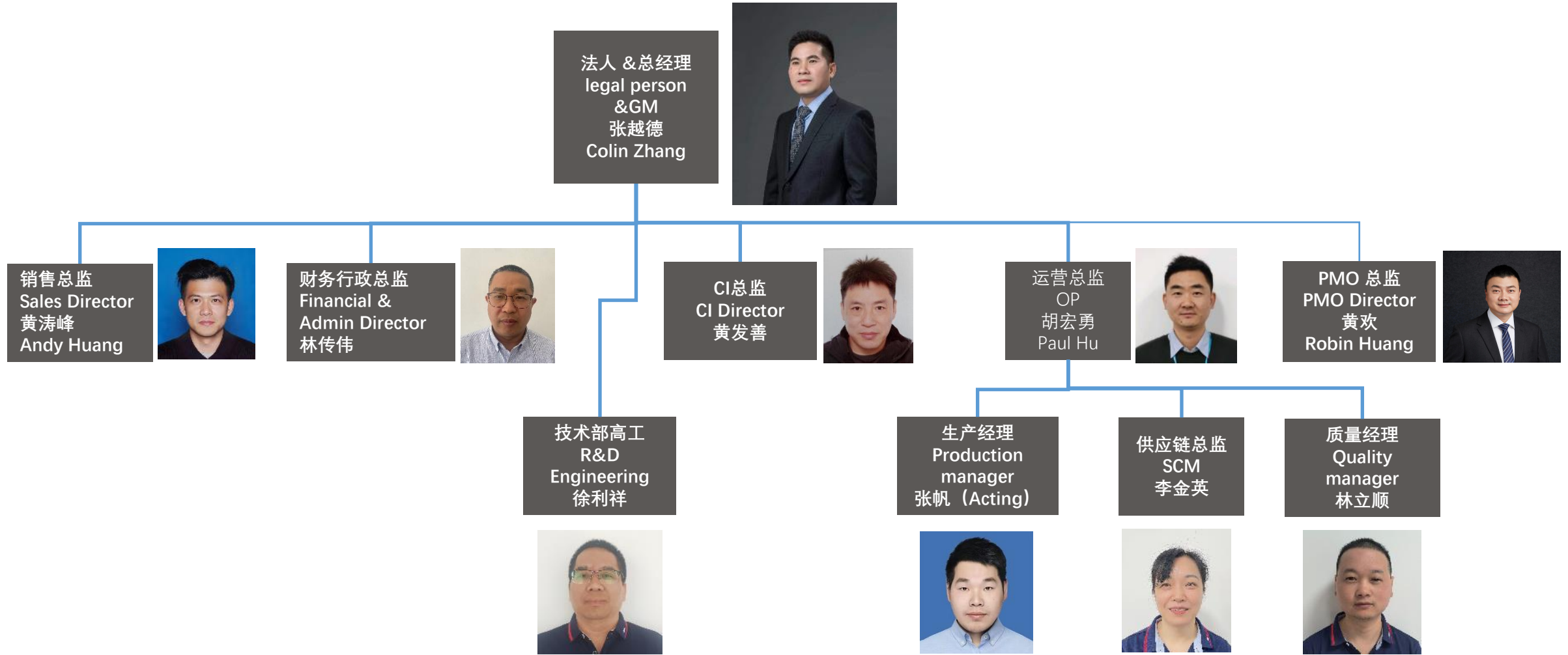
 紧急逃生通道 Exit

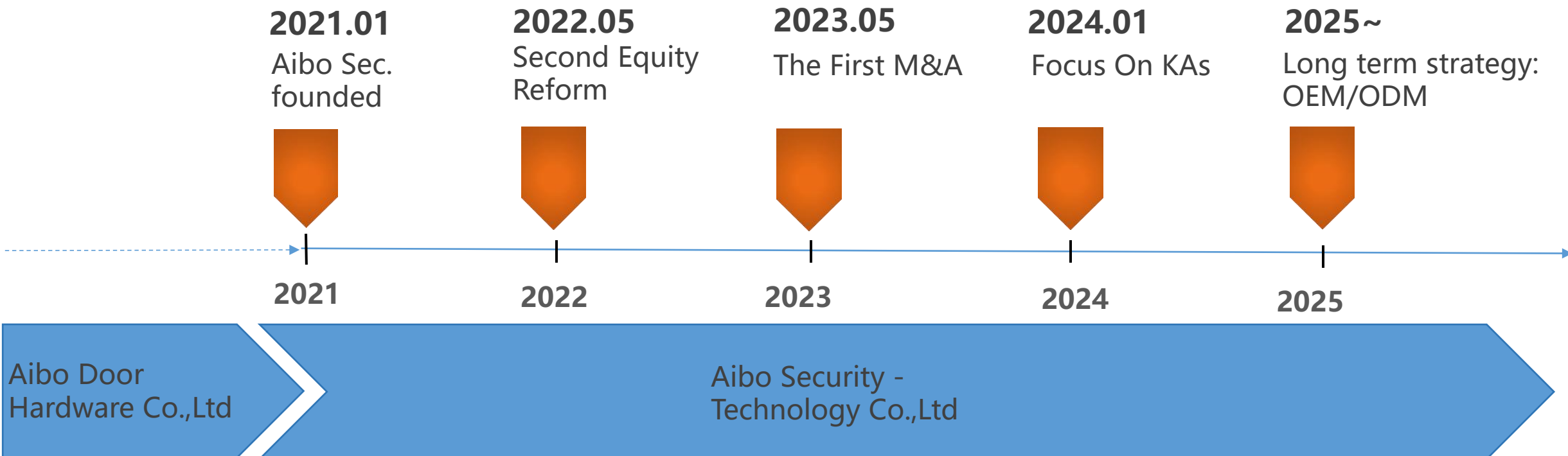
 当前位置 Your Current Position

说明:

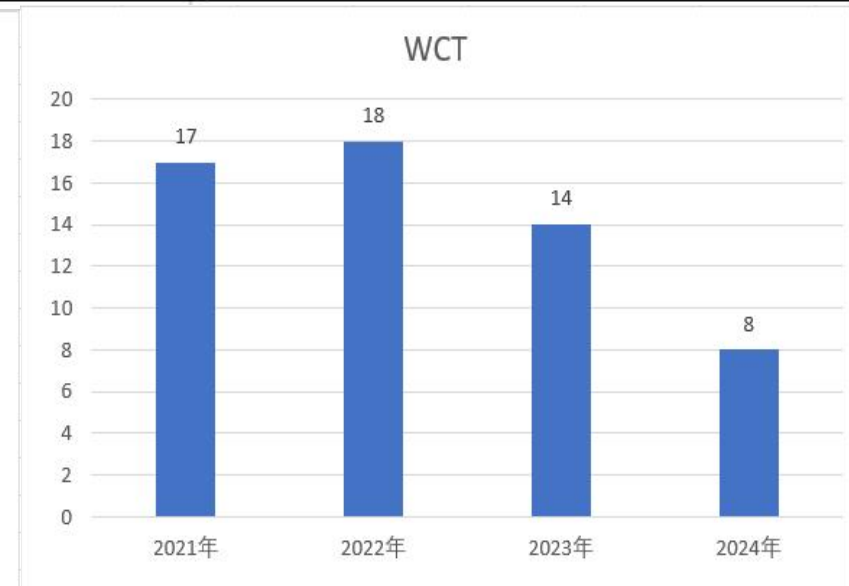
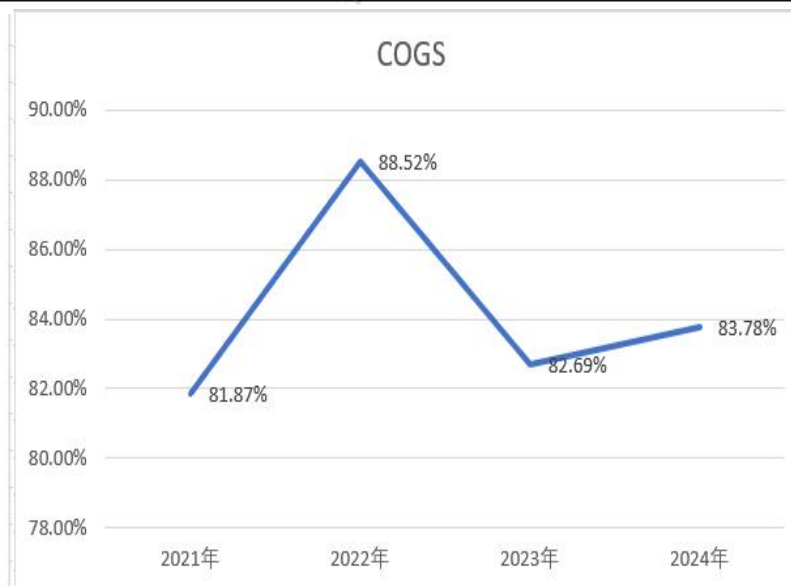
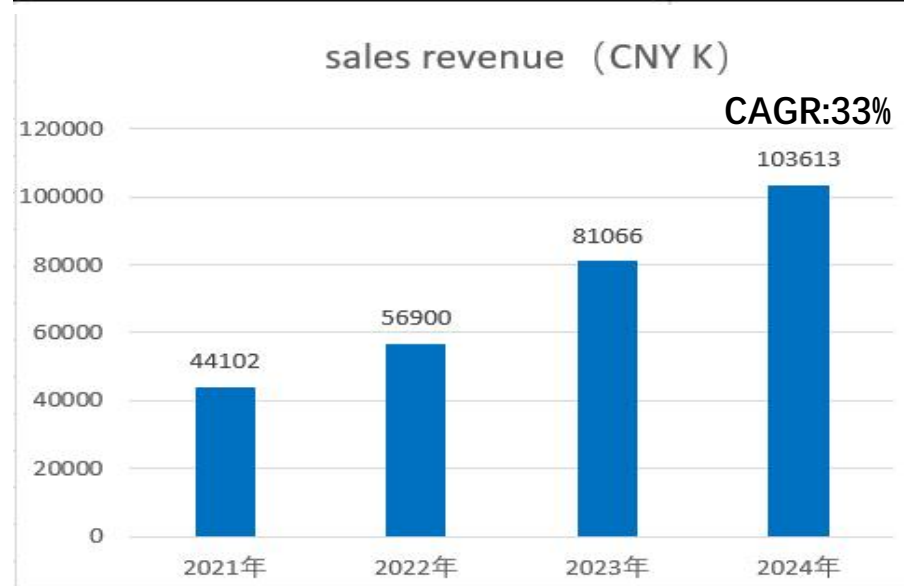
1. 火灾发生时不要惊慌, 按照疏散路线指示方向, 有序撤离到紧急集合点
2. 火警电话119

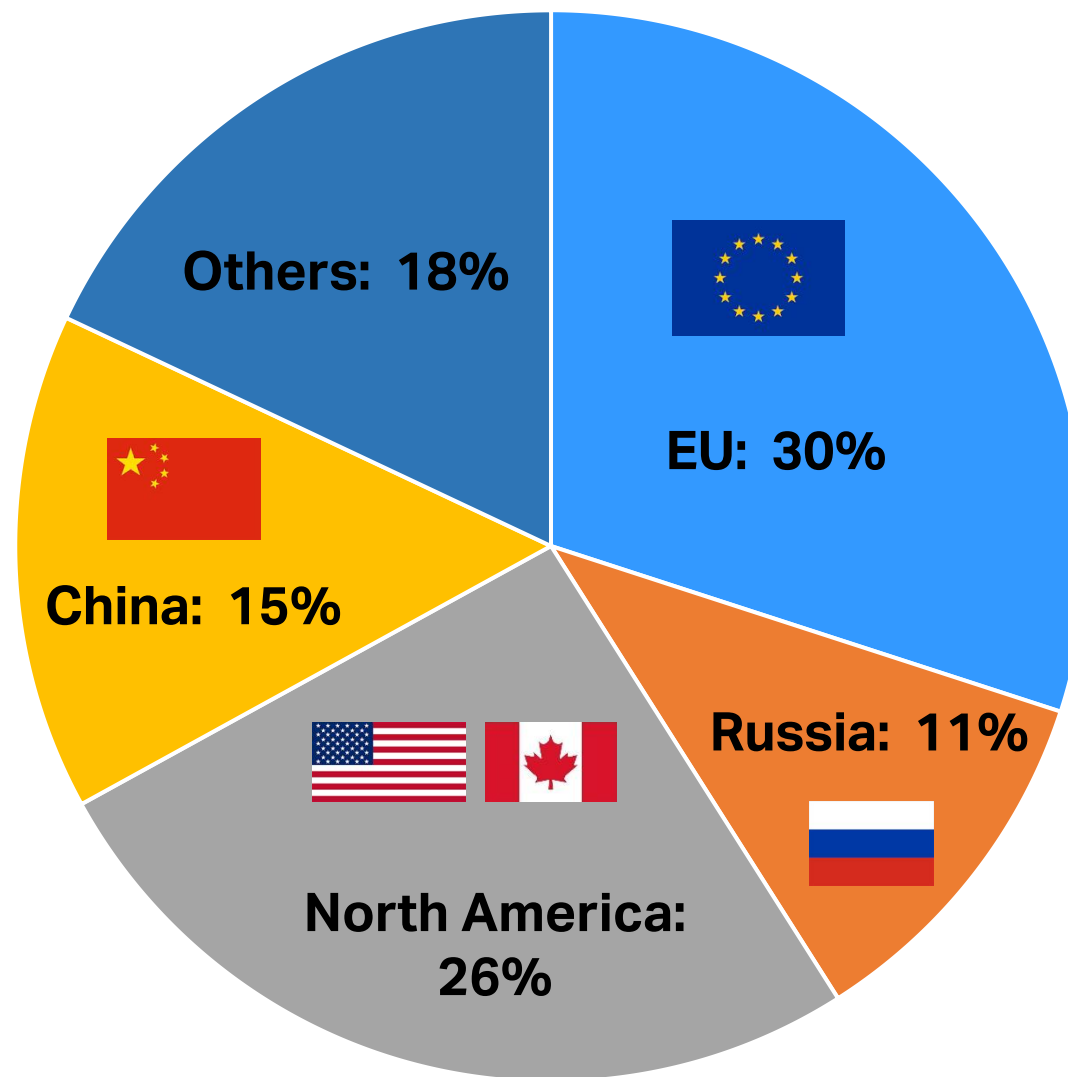
- 安全 Safety
- 爱铂介绍 Introduction of Aibo
- 工艺过程 Process Flow of Manufacturing
- 质量管控 & 实验室 Quality Control & Laboratory
- 爱铂产品 Aibo Products





浙江爱铂安防科技有限公司 CNY K ACT (op)	2024 SEP Month	2024 SEP YTD	2024 DEC FP
sales revenue	9,411	75,846	103,613
COGS	7,855	60,516	86,805
S, G & A	1,003	7,112	10,960
EBITDA	648	5,573	6,922





- 中国国内最早专业生产闭门器厂家之一，成立于2001年，地点浙江省温州，2005年转移到青田

We have one of the longest history as a door closer manufacturer in China. Established since 2001, in Zhejiang province Wenzhou, and moved to Qintian in 2005.

- 工厂建筑面积35000平方米，员工152，其中直接人工99名，研发&技术人员12名，品质管控7名

Factory Area of 35000 Square Meters , total 152 Employees, 99 Direct laborers, 12 R&D and process engineers, and 7 quality control engineers.

- ISO9001, ISO45001和ISO14001审核通过，接受ASSAABLOY EMEA、ecovadis and SGS机构可持续性审核

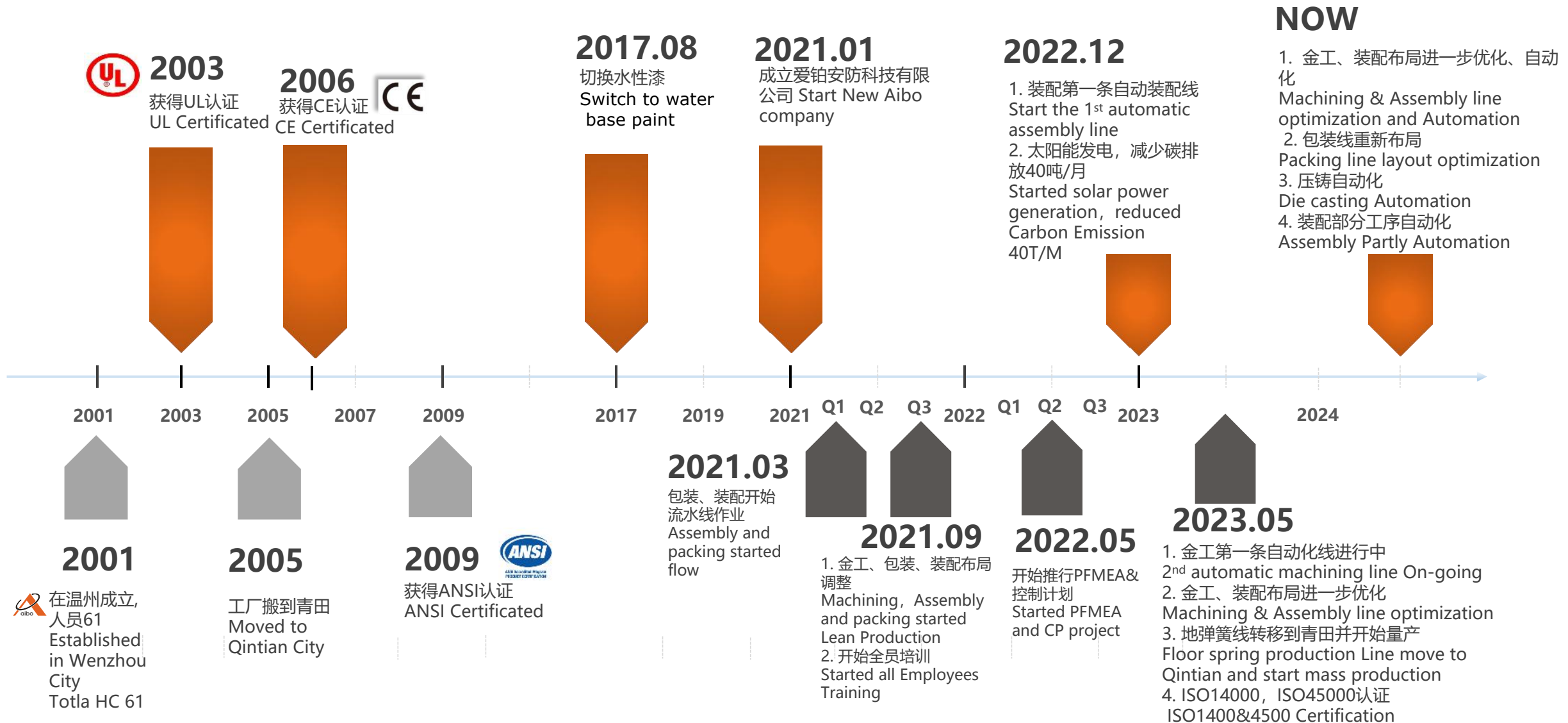
ISO9001/ISO45001/ISO14001 certificated, sustainability audited by ASSAABLOY EMEA Region、ecovadis and SGS certification bodies

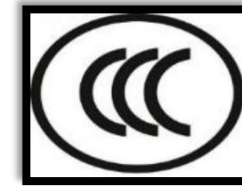
- 23个产品获得CCCF认证，5个产品系列获得CE认证，6个产品获得UL&ANSI认证，拥有16项闭门器生产技术专利证书

23 products are CCCF certificated, 5 products are CE certificated, and 6 products are UL&ANSI certificated, Owns 16 patents of DC manufacturing technology

- 最大产能：闭门器280K/Month，地弹簧50K/Month

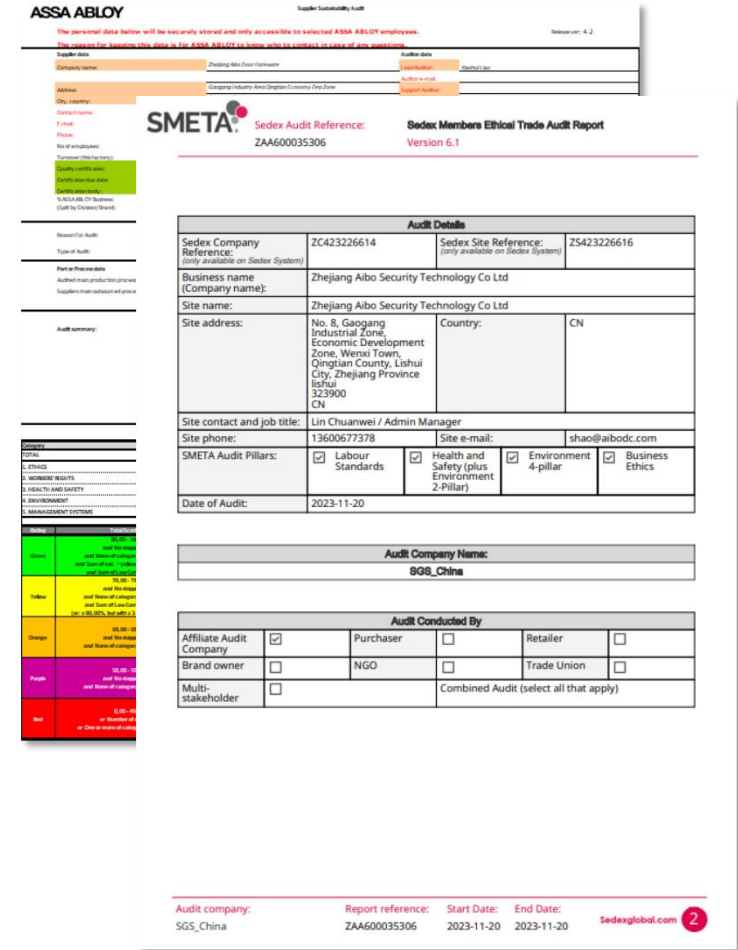
Max Capacity: Door closer 280k/Month, Floor spring 50K/Month.





世界品质 浙江制造  
Zhejiang Makes It Happen

- Sustainability audit done By ASSAABLOY EMEA on 2022.1.29
- Sustainability audit Done By ecovadis on 2023.03.02
- Sustainability audit Done By SGS on 2023.11.20



**ASSA ABLOY** Supplier Sustainability Audit

The personal data below will be securely stored and only accessible to selected ASSA ABLOY employees. This report for AssaBloy only, data is for ASSA ABLOY to know who to contact in case of any enquiries. Release ver: 4.2

Company name: Zhejiang Aibo Security Technology Co Ltd  
 Address: Gaoqiang Industrial Zone, Qingtian County, Lishui City, Zhejiang Province, China  
 City, country: Lishui, China  
 Contact person: Lin Chuanwei  
 Email: shao@aibodc.com  
 Phone: +86 153 568 1111  
 No. of employees: 100-499  
 Turnover (USD million): 10-50  
 Quality certified: Yes  
 ISO 9001 certified: Yes  
 ISO 14001 certified: Yes  
 % ESG MBOT Business: 0%  
 Staff by Diversity (Brent): 0%

**SMETA** Sedex Audit Reference: ZAA600035306  
 Sedex Members Ethical Trade Audit Report Version 6.1

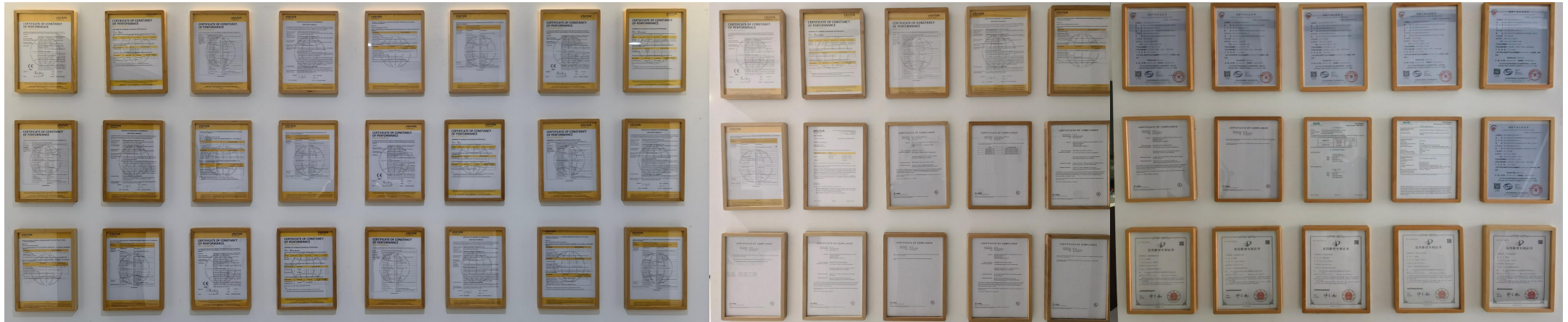
Audit Details			
Sedex Company Reference: (only available on Sedex System)	ZC423226614	Sedex Site Reference: (only available on Sedex System)	Z5423226616
Business name (Company name):	Zhejiang Aibo Security Technology Co Ltd		
Site name:	Zhejiang Aibo Security Technology Co Ltd		
Site address:	No. 8, Gaoqiang Industrial Zone, Economic Development Zone, Wexi Town, Qingtian County, Lishui City, Zhejiang Province, China, 323900 CN	Country:	CN
Site contact and job title:	Lin Chuanwei / Admin Manager		
Site phone:	13600677378	Site e-mail:	shao@aibodc.com
SMETA Audit Pillars:	<input checked="" type="checkbox"/> Labour Standards	<input checked="" type="checkbox"/> Health and Safety (plus Environment 2-Pillar)	<input checked="" type="checkbox"/> Environment 4-pillar <input checked="" type="checkbox"/> Business Ethics
Date of Audit:	2023-11-20		

**Audit Company Name:** SGS\_China

Audit Conducted By			
Affiliate Audit Company	<input checked="" type="checkbox"/>	Purchaser	<input type="checkbox"/>
Brand owner	<input type="checkbox"/>	NGO	<input type="checkbox"/>
Multi-stakeholder	<input type="checkbox"/>	Retailer	<input type="checkbox"/>
		Trade Union	<input type="checkbox"/>
		Combined Audit (select all that apply)	

Audit company: SGS\_China  
 Report reference: ZAA600035306  
 Start Date: 2023-11-20  
 End Date: 2023-11-20  
 Sedexglobal.com 2







## 综合办公室 Operation Office

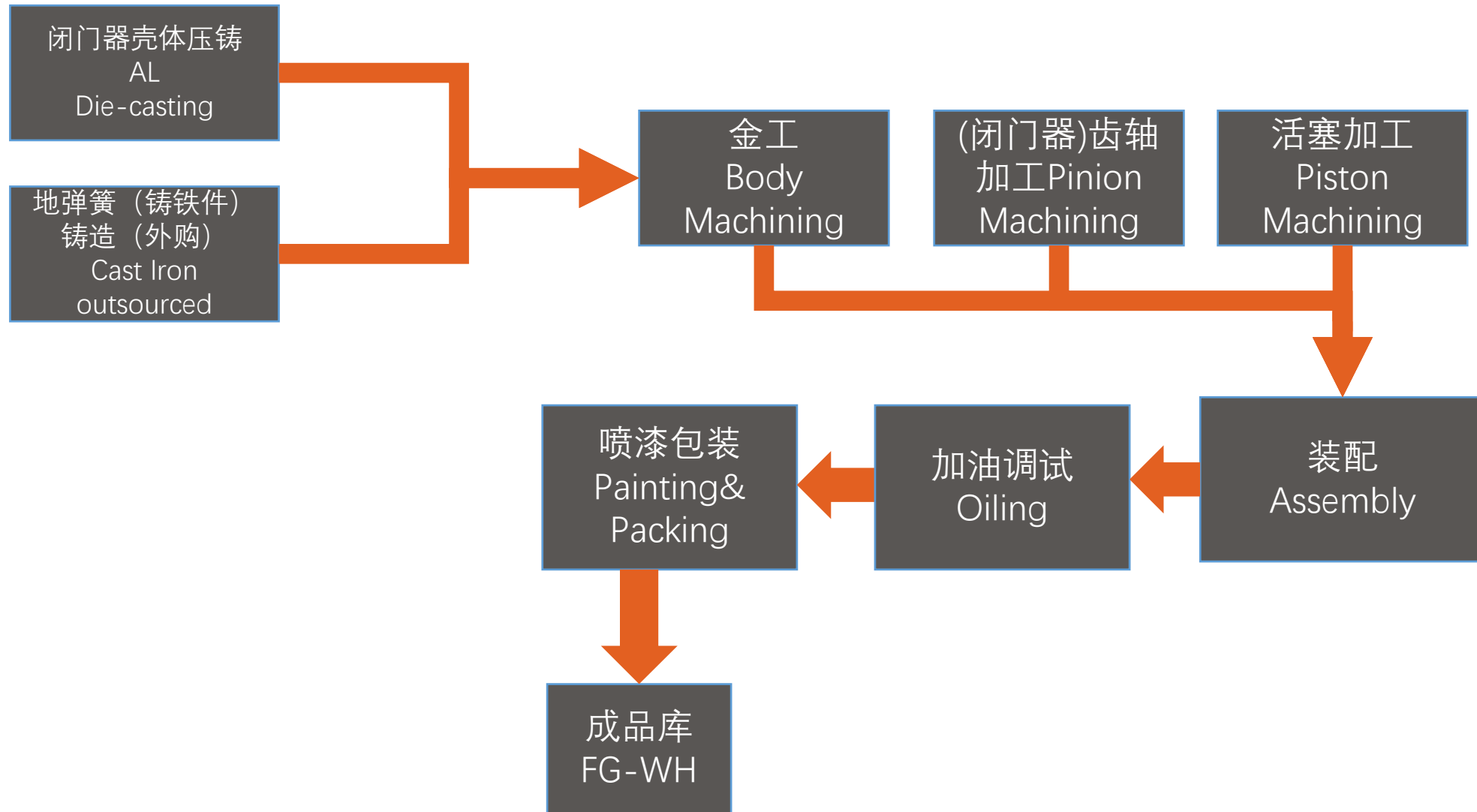


## 爱铂学院 Aibo College





- 安全 Safety
- 爱铂介绍 Introduction of Aibo
- 工艺过程 Process Flow of Manufacturing
- 质量管控 & 实验室 Quality Control & Laboratory
- 爱铂产品 Aibo Products



## 项目名称Project Name:

地弹簧生产线 Floor spring production line

### 以前 Before:

1. 手动打孔 Manual drilling
2. 手动装夹 Manual operation for CNC

节拍: 200秒, 产能: 1万/月, 手动生产

CT: 200sec, Capacity: 10K/M, operated by operators

### 现在 Current

节拍: 45秒, 产能: 5万/月, 流水线生产

CT: 45sec, Capacity: 50k/M, production by flow

设备加工能力: 活塞孔加工最长160mm

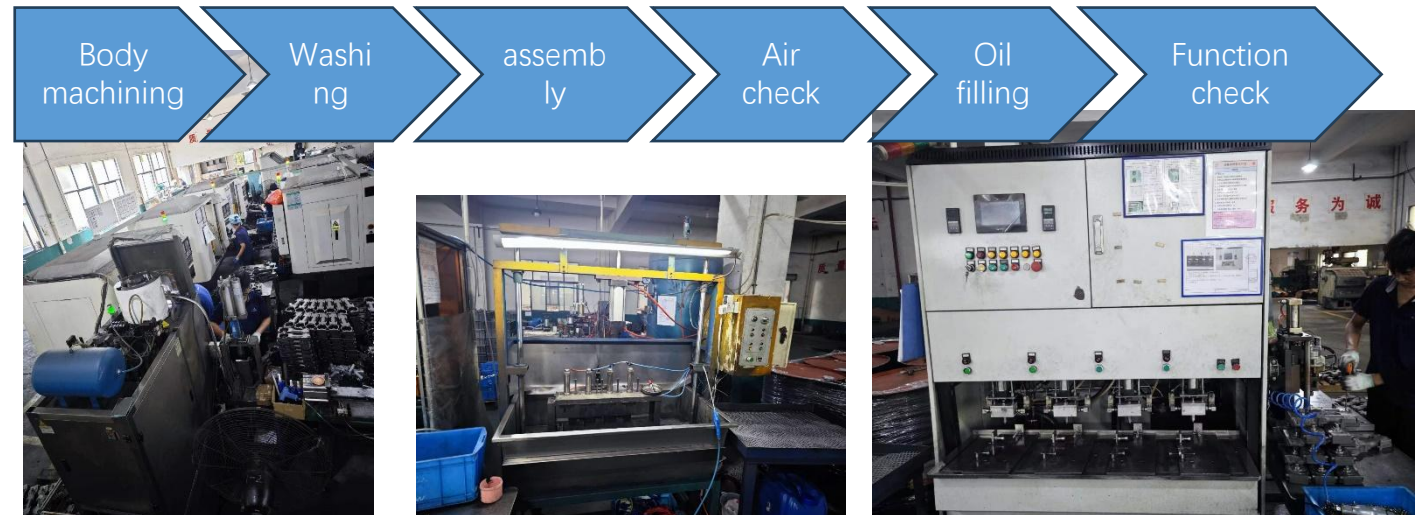
Machine capability: Piston hole length max 160mm

### 节省Saving :

2HC/Year (160KRMB/Year )

项目完成日期Project finish date :

Q2 of 2023



## 项目名称Project Name:

美标壳体自动化加工线 Automatic American DC Body Machining Line

### 以前 Before:

1. 手动打孔 Manual drilling

2. 手动装夹 Manual operation for CNC

节拍: 200秒, 产能: 1万/月, 手动生产

CT: 200sec, Capacity: 10K/M, operated by operators

### 将来 Future

节拍: 90秒, 产能: 2万/月, 全自动生产

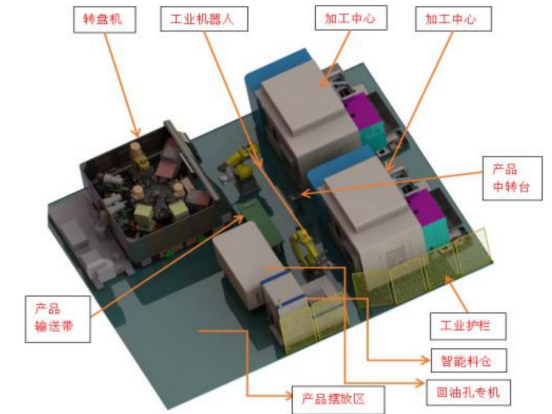
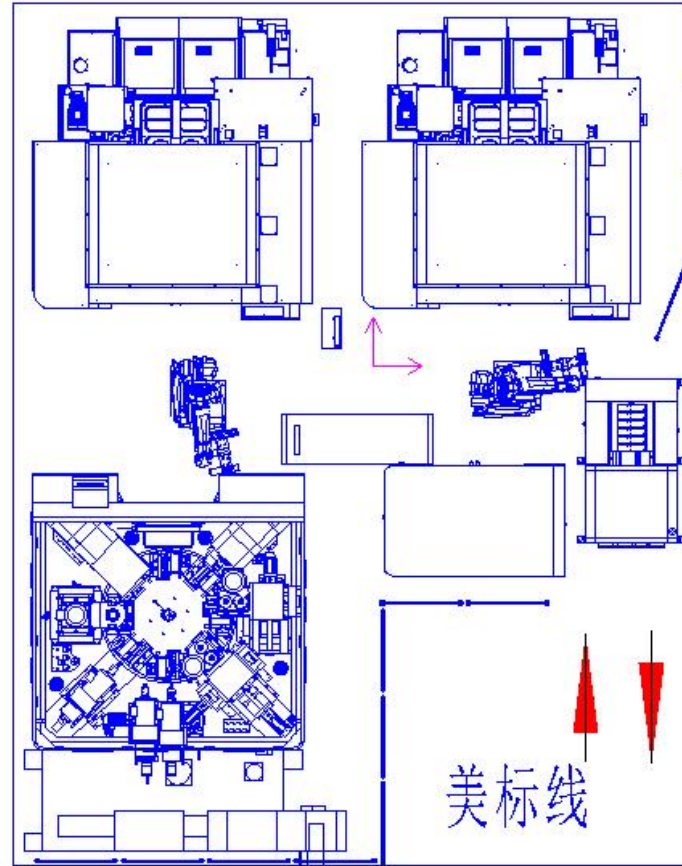
CT: 90sec, Capacity: 20k/M, Fully automation

### 节省Saving :

2HC/Year (160KRMB/Year )

项目完成日期Project finish date :

Q4 of 2023



## 设备名称 Machine Name:

超声波壳体清洗线 Body Ultrasonic Wash Line

## 以前 Before:

壳体与闭门器在一起清洗。

Body wash with DC.

## 现在 Current:

全新的特殊设计的超声波清洗机，只清洗加工过的壳体。

New Wash machine of new design with long distance ultrasonic, only wash body after machining.

## 启用时间 Usage start date:

2022.05



## 设备名称 Machine Name:

自动外圆磨 Automatic OD Grinding

## 以前 Before

手动操作机器

Manual operate machine

## 现在 Current

全自动装夹、砂轮修正外圆磨

Automatic clamping, grinding wheel reshape

## 启用时间 Usage start date :

2021.04



## 项目名称 Project Name:

闭门器自动装配机 DC Automatic Assembly Line

## 以前 Before

手动装配

Manual assembly

## 现在 Current

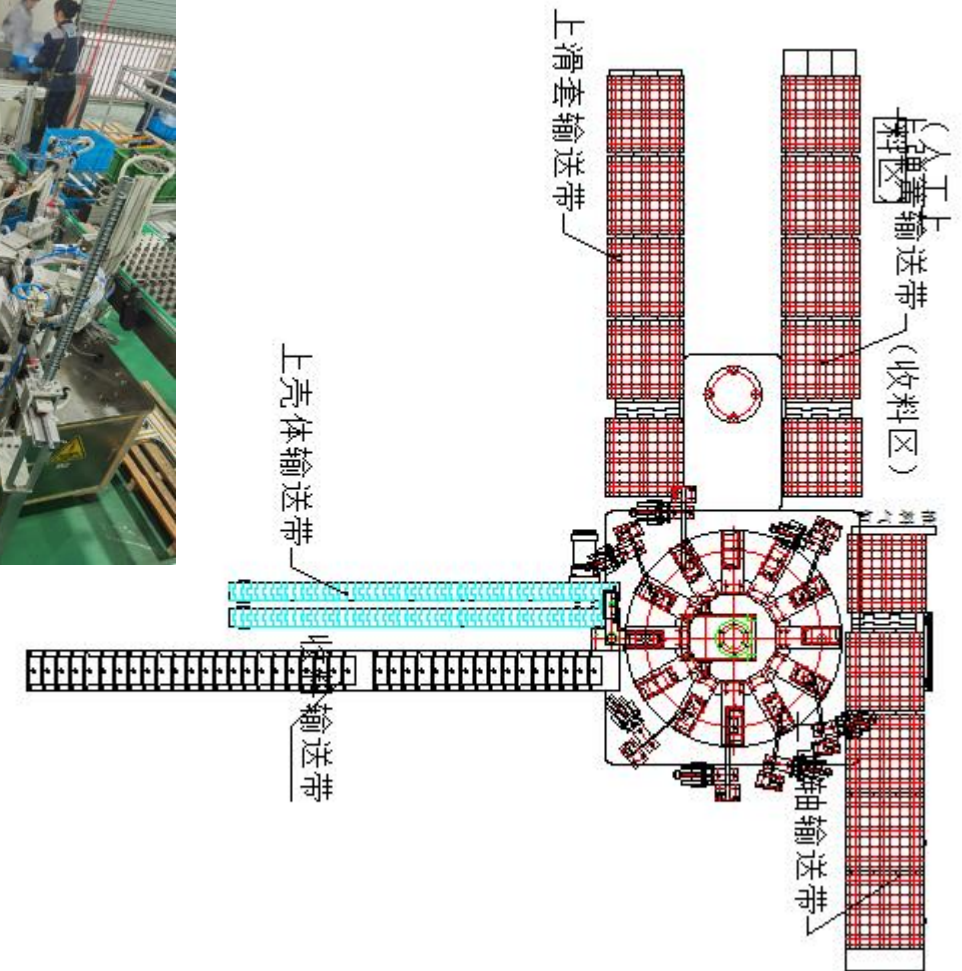
全自动装配闭门器

Fully Automatic assembly for TS77 project

节省 Saving: 1HC/year, 80K/year

项目完成日期 Project finish date:

2022/12



## 设备名称 Machine Name:

水性漆喷漆线 Water Base Paint Painting Line

## 以前 Before

油性漆生产线

## 现在 Current

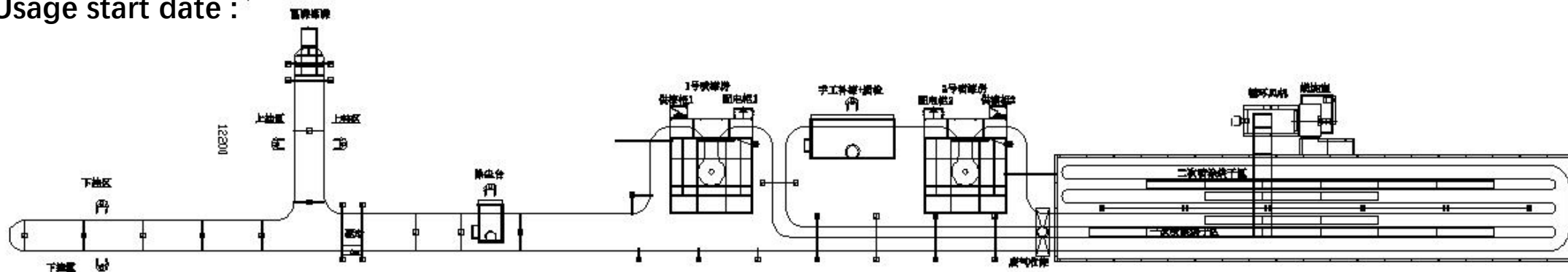
全自动静电水性漆喷涂线

Automatic water base paint painting line



## 启用时间 Usage start date :

2017.07



## 设备名称 Machine Name:

金工-装配连线 Machining-Assembly line

### 现在 Current

金工，装配孤岛生产

Machining and assembly discrete type Layout

### 将来 Future

金工U型线 U-sharp production line

机器人 Automation machining

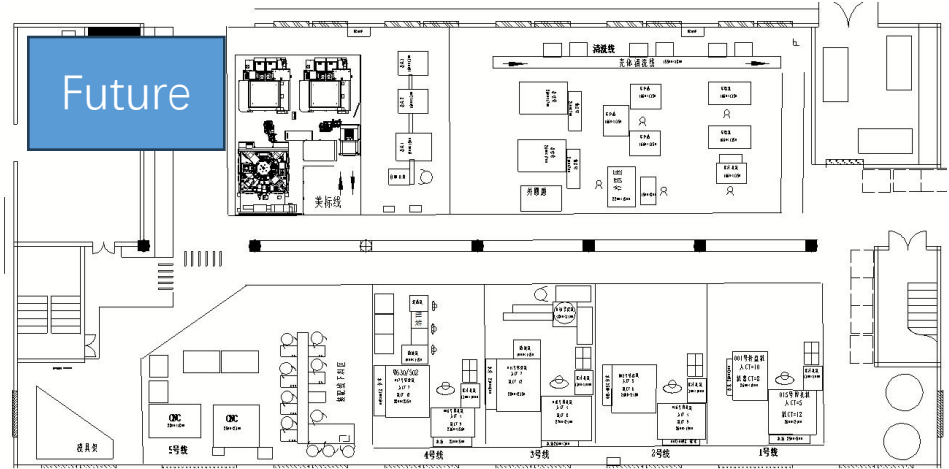
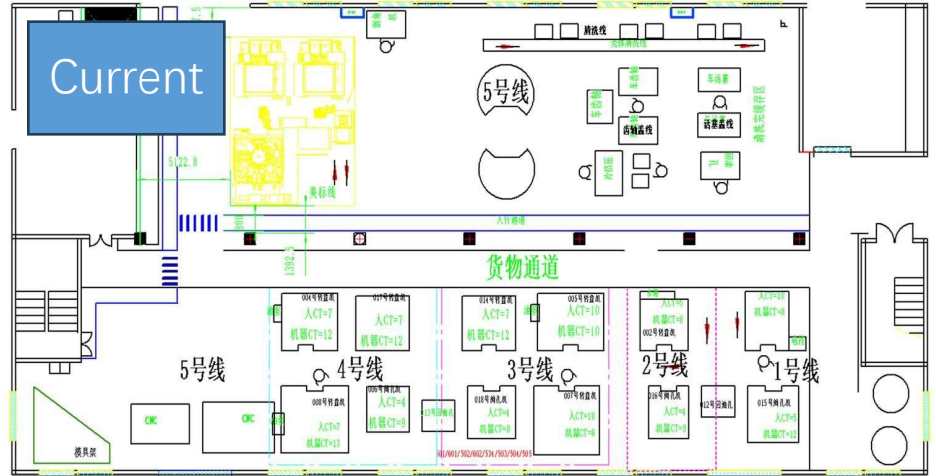
金工-装配—物流 Machining to Assembly one-PC flow

### 节省 saving

- 1. 缩减三个人头 Three head count reduction
- 2. 库存缩减30万 Inventory reduce 300KRMB

### 启用时间 Usage start date :

2024.10



## 设备名称Machine Name:

自动螺丝包装机 Automatic screw packing

## 现在 Current

手动包装螺丝 Manual screw packing

## 将来 Future

自动包装 Automatic packing

自动称重检查 Automatic scan weight to check missing screw

## 节省 saving

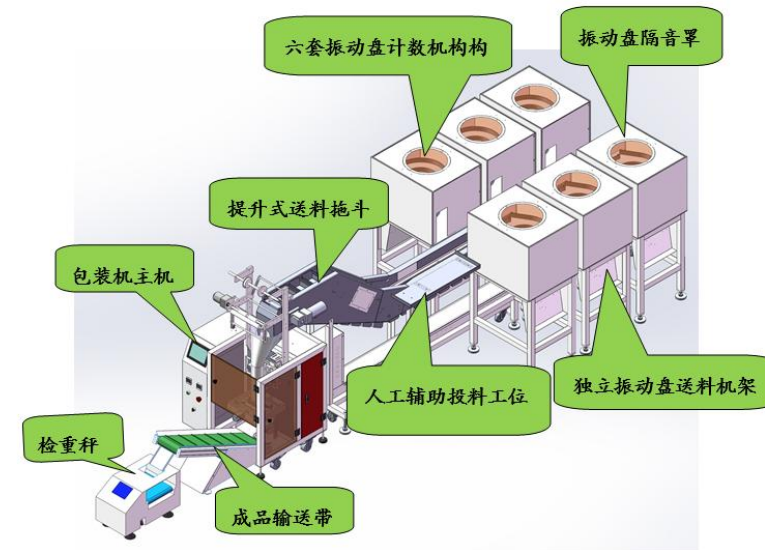
1. 缩减一个人头 one head count reduction

启用时间 Usage start date :

2024.05



一、螺丝包装机设计方案图:



六盘螺丝自动包装机 3D 图 (仅供参考)

- 安全 Safety
- 爱铂介绍 Introduction of Aibo
- 工艺过程 Process Flow of Manufacturing
- 质量管控 & 实验室 Quality Control & Laboratory
- 爱铂产品 Aibo Products

## 质量管控 Quality control

IQC



Inspection Station  
Samples  
Inspection tools, gauges  
SIP  
CP  
Records

IPQC



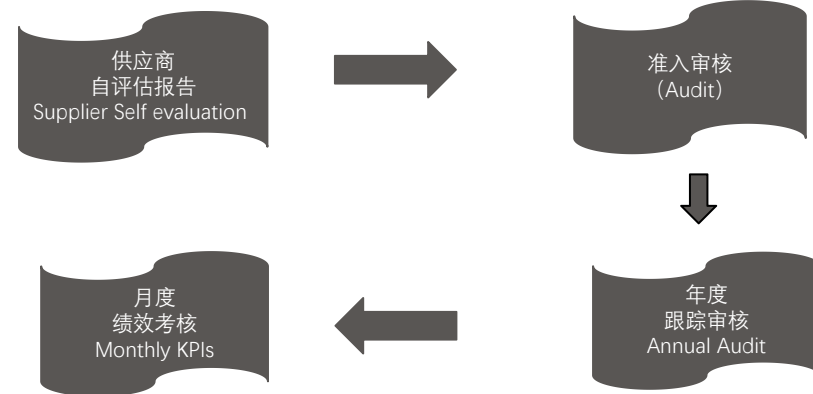
Inspection Station  
Defect Samples  
Inspection tools, gauges  
SIP  
CP  
Records

OQC

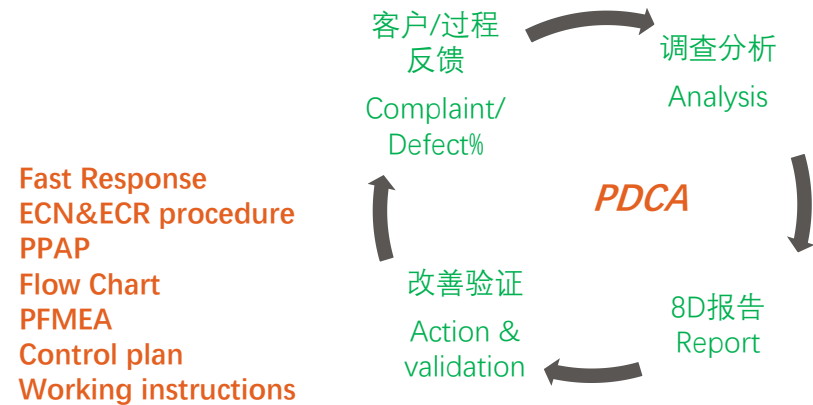


Inspection Station  
FG Samples  
Inspection tools,  
SIP  
CP  
Records

## 供应商质量管理 Supplier Quality management



## 持续改善 Continuous improvement

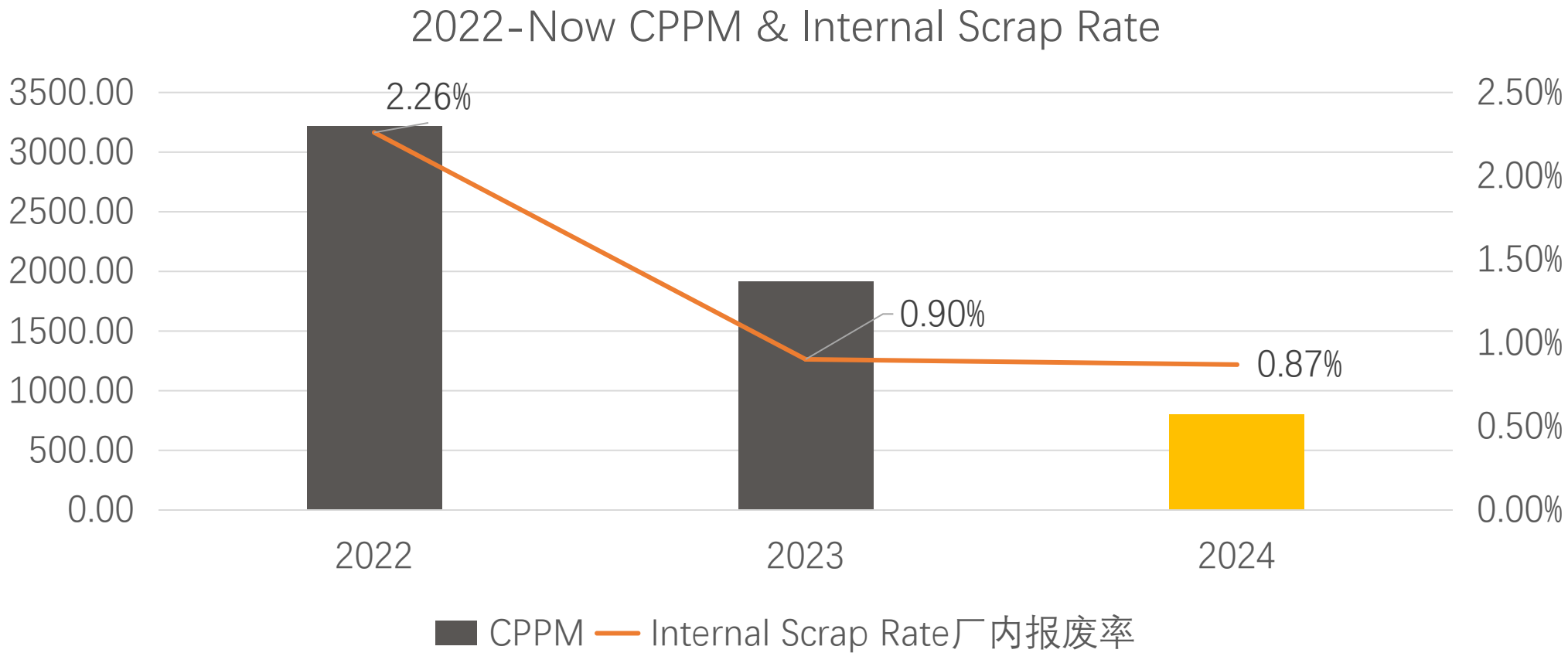


## Flow Chart PFMEA Control plan

文件名称 File Name		B5033AW/B6033AW 闭门锁过程流程图				版本Rev		A0	
责任人Owner		王刚、陈杰、张帆、周立、林立顺				文件编号Doc. No.		AB/QW-PD-004	
工序号 P.N.	工序名称 Process	加工	移动	贮存	检验	操作描述 Operation Description	关键产品特性 Key Product Characteristic	关键控制特性 Key Control Characteristic	
10	进料检验						ADC12#铝合金, Si: 10.0-12; Fe: ≤ 0.8-1.0; Cu: 1.8-2.5; Mn: ≤0.5;		
20	压铸成型								
30	冲裁压包								
40	入库存储								
50	铣床面								
60	绞脚孔								
70	抛光								
80	抛丸								
90	专机加工回油孔								
100	专机加工调速调孔&横直孔								
110	倒角								

Potential Failure Modes and Effects Analysis Process FMEA																	
Print #		B5033AW/B6033AW		Design Responsibility		FMEA Number		1									
Item Name		本体		Contant Number		Prepared By		Paul									
版本号		Rev.A		Key Date		FMEA Date(Orig.)		2021.09.07									
Core Team					Paul, 喻文祥, 林文彬, 张帆, 滕杰, 潘虹, 周立, 王天贵												
Control Plan Number					控制计划(Control Plan)												
Key Contact/Phone					主变更人/电话												
Date (Orig.)					日期(编制)												
Customer Engineering Approval/Date (If necessary)					顾客工程批准/日期 (如需要) : N/A												
Supplier/Plant Approval/Date					供应商/工厂批准/日期												
Other Approval/Date (If necessary)					其它批准/日期 (如需要) : N/A												
Version: A0																	
NO.	Incoming material	Item Name	特性/功能	要求	潜在失效模式	潜在失效后果	Part / Process Name/Operation No. 零件/过程/操作	Characteristics/特性			Method/方法				Reaction Plan 反应计划		
								NO. 编号	Product 产品	Process 过程	Evaluation/Measurement Technique 评价/测量技术	Sample 样品	Control Method 控制方法				
10	进料检验	化学成分	光谱仪	10.1	化学成分	ADC12#铝合金, Si: 10.0-12; Fe: ≤0.8-1.0; Cu: 1.8-2.5; Mn: ≤0.5; Mg: ≤0.3; Zn: ≤1.0; Sn: ≤0.3; Ni: ≤0.5; Pb: ≤0.1; 其余AL.	光谱仪	10.1	化学成分	★	供应商材料测试报告	1份报告	每批次	供应商提供	与供应商沟通: 接收; 提高; 让步接收		
10.2	外观	外观外观	目视	10.2	外观外观	外观表面平整、无锈孔、无锈、水迹、油污等不良	目视	10.2	外观外观	★	检验员抽样10根	每批次	通知检验员记录				
10.4	包装	包装	目视	10.4	包装	包装密封严密无脱落	目视	10.4	包装	★	100%	每批次	通知检验员记录				
10.5	力学性能	力学性能	拉伸机	10.5	力学性能	抗拉强度≥220MPa; 延伸率1.4%	供应商材料测试报告	10.5	力学性能	★	1次	每批	供应商提供				
20.2	装配	装配	铁勺子	20.2	装配	2小时装配一次	铁勺子	20.2	装配	★	1次/2小时(员工)	正常生产	新记录表单	通知主管			
30.1	压铸成型	压铸成型	400T压铸机台控制柜	30.1	压铸成型	温度	400T压铸机台控制柜	30.1	压铸成型	★	630~680°C	显示器	1次(员工记录)	每班		压铸机台参数记录表	调整; 通知机修维修; 断电停机报地址
30.2	压铸成型	压铸成型	400T压铸机	30.2	压铸成型	供压射氮气压力	400T压铸机	30.2	压铸成型	★	9.5-10.5MPa (95-105Bar)	压力表	1次(员工记录)	每班		压铸机台参数记录表	调机(每班); 通知主管
30.3	压铸成型	压铸成型	400T压铸机	30.3	压铸成型	压压氮气压力	400T压铸机	30.3	压铸成型	★	9.5-10.5MPa (95-105Bar)	压力表	1次(员工记录)	每班		压铸机台参数记录表	调机(每班); 通知主管
30.4	压铸成型	压铸成型	400T压铸机	30.4	压铸成型	供压射油压	400T压铸机	30.4	压铸成型	★	11MPa-12MPa (110Bar-120Bar)	压力表	1次(员工记录)	每班		压铸机台参数记录表	调机(每班); 通知主管
30.5	压铸成型	压铸成型	400T压铸机	30.5	压铸成型	增压油压	400T压铸机	30.5	压铸成型	★	11MPa-12MPa (110Bar-120Bar)	压力表	1次(员工记录)	每班		压铸机台参数记录表	调机(每班); 通知主管
30.6	压铸成型	压铸成型	400T压铸机	30.6	压铸成型	供压射起点的压力	400T压铸机	30.6	压铸成型	★	29	压力表	1次(员工记录)	每班	压铸机台参数记录表	调机(每班); 通知主管	
30.7	压铸成型	压铸成型	400T压铸机	30.7	压铸成型	供压射速度	400T压铸机	30.7	压铸成型	★	2.5	显示器	1次(员工记录)	每班	压铸机台参数记录表	调机(每班); 通知主管	
30.8	压铸成型	压铸成型	400T压铸机	30.8	压铸成型	供压射速度	400T压铸机	30.8	压铸成型	★	4-6秒	显示器	1次(员工记录)	每班	压铸机台参数记录表	调机(每班); 通知主管	
30.9	压铸成型	压铸成型	400T压铸机	30.9	压铸成型	供压射速度	400T压铸机	30.9	压铸成型	★	水与脱模剂比100:1 (按模剂型号6501)	固定卷尺	1次(员工记录)	每班	压铸机台参数记录表	调整(每班)	
30.10	压铸成型	压铸成型	400T压铸机	30.10	压铸成型	表面外观	400T压铸机	30.10	压铸成型	★	1. 外观不得有磁伤、裂纹、变形、毛刺、气孔、气孔、气孔、夹渣 (按照外观检验标准); 2. 字体、Logo位置与大小符合台要求	目视	100%员工自检; 检验员上午、下午抽检一次	每班	压铸机台参数记录表	调机(每班); 通知主管	



## 爱铂改善基于理论运算&验证数据(模拟运算, CPK..) Aibo Improvement based on calculations and testing result (Simulations, CPK...)

闭门器性能测试记录表 (CE)		编号
订单编号	产品型号	Aibo/QM-QA-03
生产批号	批数量	版本 B/O
安装尺寸	安装方式	测试类型
		送检
		出货检

浙江爱铂安防科技有限公司 - 闭门器曲线测试系统

闭门器内部油压力检测报告		报告编号
产品名称 闭门器		AS/4.2-13
产品型号 YS620		版本 A/O
测试目的	测试闭门器内部承压压力	测试编号 2023050901
样品来源	车间	测试方法 进行注入液压油, 产生内部压力。
测试日期	2023.5.9	测试员 张瑞瑞
测试结论		审核

测试前产品图样:

测试后图片:

测试过程描述	
压力值 (标准 ≥ 18Mpa)	压力到达20Mpa以上, 闭门器底部破裂
结论	符合设计要求

备注:  
1. 每半年一次产品压爆测试, 必须有相应的记录。  
2. 测试样品源于生产线随机抽样。  
3. 特殊情况做压爆测试, 需要说明情况。

实时编辑器 - C:\Users\DELL\Desktop\论子\door\door closer templet\5023\5023门框安装曲线图.mlx

给定空间弹簧曲线图计算.mlx × 滑轨曲线图.mlx × 5023平行安装曲线图.mlx × 5023门框安装曲线图.mlx × 全闭计算.mlx × AA floor spring.mlx × +

% mm, degree

% Set values

d = 16 ; % Gear Shaft Diameter

Q = 15 ; % Pre-compressed angle (degree)

x0 = 10 ; % Pre-compressed distance

k = 49; % Coefficient of elasticity

c2 = 30; % thickness of door leaf

a = 180 ; % Length from gear shaft to hinge

e = 45 ; % Length from gear shaft to Forearm at 0 degree

b = 223 ; % Main arm length

f = 0.2 ; % 系统摩擦力综合

a0 = asind(c2/sqrt(a^2+c2^2));

minA = 0 ; % Minimum opening angle

maxA = 132 ; % Maximum opening angle

% Function

爱铂实验室可以按照CE、UL和ANSI标准要求测试地弹簧和闭门器

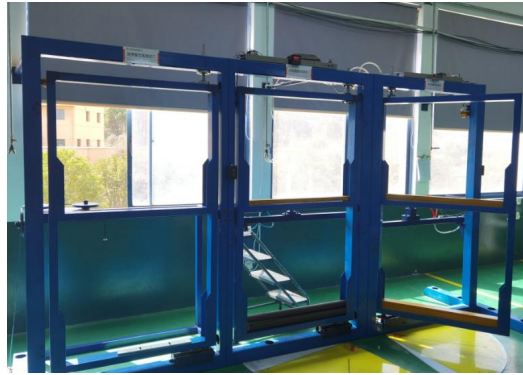
Aibo Testing Lab can test floor springs and door closers according to the requirements of CE, UL and ANSI

- 性能测试 Performance Testing
- 寿命测试 Cycle Testing
- 负载测试 Load Testing
- 盐雾耐腐蚀测试 Salt Spray Testing
- 高低温测试 High & Low Temperature Testing

性能测试机  
Performance Testing Instrument



地弹簧寿命&负载测试机  
Floor Spring Cycle & Load Testing Doors



高低温试验箱  
High&Low Temperature Testing Chamber



盐雾耐腐蚀测试机  
Salt Spray Testing Instrument



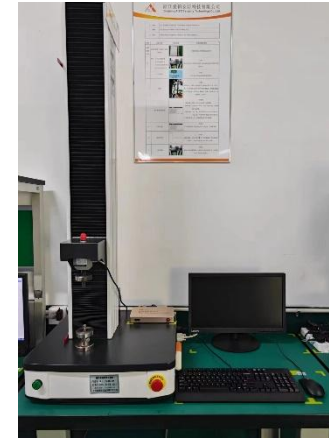
闭门器寿命&负载测试机  
Door Closer Cycle & Load Testing Doors



弹簧疲劳测试机  
Spring Life Testing Instrument



弹簧测试机  
Spring Testing Instrument



地弹簧&闭门器寿命加速测试机  
Floor Spring & Door Closer  
Accelerated Cycle Testing Instrument



影像仪  
VMM



硬度计  
Hardness testing instrument



标准光源箱  
Colorcontroller light box



- 安全 Safety
- 爱铂介绍 Introduction of Aibo
- 工艺过程 Process Flow of Manufacturing
- 质量管控 & 实验室 Quality Control & Laboratory
- 爱铂产品 Aibo Products

## ANSI/UL certificated products

### 504 Series



#### Product Features

- Grade 1 ANSI Test Report
- Meets and exceeds ADA requirements
- Tri Packed
- Adjustable Back check
- Power Adjustable #2, #3, #4
- Self-Drilling screws
- Cover included
- Bracket included
- UL Listed
- 8-3/16"x3/4" Hole Pattern



### 505 Series



#### Product Features

- Grade 1 ANSI Test Report
- Meets and exceeds ADA requirements
- Tri Packed
- Adjustable Back check
- Power Adjustable #4, #5, #1-4, #2-5, #3-6
- Self-Drilling screws
- Cover included
- Bracket included
- UL Listed
- 9-1/16"x3/4" Hole Pattern



### 602-5BW



#### Product Features

- Grade 1 ANSI Test Report
- Meets and exceeds ADA requirements
- Tri Packed
- Adjustable Back check
- Power Adjustable 1-5 or 1-6
- Self-Drilling screws
- Cover included
- Bracket included
- UL Listed
- 9-1/16"x3/4" Hole Pattern



### 901-6BWS(cws)



#### Product Features

- Grade 1 ANSI Test Report
- Meets and exceeds ADA requirements
- Tri Packed
- Adjustable Back check and Delay
- Power Adjustable 1-6
- Self-Drilling screws
- Slim Line Cover or Full Line Cover to choose
- Bracket included
- UL Listed
- 12" x 3/4" Hole Pattern

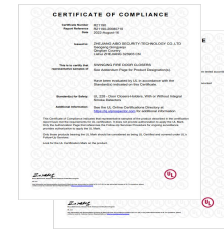


### 901-6BW(CW)



#### Product Features

- Grade 1 ANSI Test Report
- Meets and exceeds ADA requirements
- Tri Packed
- Adjustable Back check and Delay
- Power Adjustable 1-6, 1-4, 2-5, 3-6
- Self-Drilling screws
- Slim Line Cover or Full Line Cover to choose
- Bracket included
- UL Listed
- 11-1/8" x 1-1/8" Hole Pattern

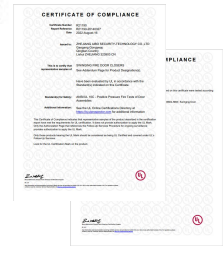


### AB001



#### Product Features

- Grade 1 ANSI Test Report
- Cast Iron
- Meets and exceeds ADA requirements
- Tri Packed
- Adjustable Back check and Delay
- Power Adjustable 1-6
- Self-Drilling screws
- Cover included
- Bracket included
- UL Listed



## 902-4CW



- Fire tested to En1634
- Certified En1154
- Non-handed unit
- Adjustable closing and latching speed
- Adjustable back check and delay function
- 500,000 cycles times tested
- Adjustable power size EN2 to EN4.
- Finish: Silver, Gold, White, Black, Brown, Bronze
- Cover & Arm Finishes: Silver, SNP, EB, PCP, SCP, PNP

## 3023AW



- Fire tested to En1634
- Certified En1154
- Non-handed unit
- Adjustable closing and latching speed
- Closing cycle largely unaffected by temperature
- Hold open function available
- 500,000 cycles times tested
- EN2/3/4 adjustable by position
- Back check function optional
- Finish: Silver, Gold, White, Black, Brown, Bronze
- Cover & Arm Finishes: Silver, SNP, EB, PCP, SCP, PNP

## 5023AW



- Fire tested to En1634
- Certified En1154
- Low cost solution for standard doors
- Quick and easy to install
- Non-handed unit Adjustable closing and latching speed
- Back check function optional
- 500,000 cycles times tested
- Fixed power size 3
- Finish: Silver, Gold, White, Black, Brown, Bronze
- Cover & Arm Finishes: Silver, SNP, EB, PCP, SCP, PNP force adjustment functions.

## 8023AW



- Fire tested to En1634
- Certified En1154
- Quick and easy to install
- Non-handed unit
- Adjustable closing and latching speed
- Back check function optional
- 500,000 cycles times tested
- Fixed power size 3
- Sliding arm optional
- Finish: Silver, Gold, White, Black, Brown, Bronze

## 8100 Series



- Closing speed can be adjusted independently.
- Latching speed can be adjusted independently.
- B8000AD & B8100AD series door closers can keep stopping state exceed 85 degree.
- B8124BW have back check function and adjustable speed.
- B81□-□CW are provided with back check and closing force adjustment functions.

## 7000 Series



- Closing speed can be adjusted independently.
- Latching speed can be adjusted independently.
- B7000BW have back check function and adjustable speed.
- B70□-□BW are provided with back check and closing force adjustment functions.

## 6000 Series



- Closing speed can be adjusted independently.
- Latching speed can be adjusted independently.
- B6000AD series door closers can keep stopping state exceed 85 degree.

## 5000 Series



- Closing speed can be adjusted independently.
- Latching speed can be adjusted independently.
- B5000AD series door closers can keep stopping state exceed 85 degree.
- B5000BW have back check function and adjustable speed.
- B50□-□BW are provided with back check and closing force adjustment functions.

## AB500 Series



- Closing speed can be adjusted independently.
- Latching speed can be adjusted independently.
- B3000AD series door closers can keep stopping state exceed 85 degree.
- Inside hold open function optional
- Back check function optional
- Power size adjustable from EN2 to EN4 based on different installation position
- Sliding rail optional

## AB1000 Series

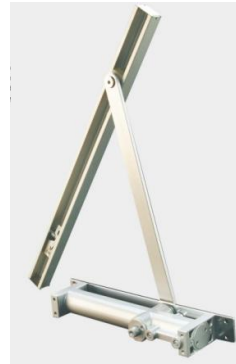


## AB800 Series



CE certificating

## 2000 Series



## 2100 Series



## Cam action



CE certificating



## AB9500



- ◆外观尺寸: 339 x 160 x 53.5mm
- ◆适用于最大门扇宽度1300mm, 最大承受门重为200kg。
- ◆门扇最大开启125度, 可选择90度或115度定位。
- ◆二段速度调节, 以满足不同场合要求的闭门效果。
- ◆内置减压阀, 防止因外来强压或强风状态下闭门而造成的弹簧损坏或漏油。
- ◆通用型设计, 适合左、右手及双向开启门扇。
- ◆采用美国进口液压油, 保证零下40度气温下不会影响闭门速度。
- ◆水泥盒中弹簧芯可上、下、左、右、前、后调节安装时更加方便, 更加容易施工。
- ◆产品通过韩国KSA认证, 保证使用次数达五十万次以上。
- ◆按照ISO9001国际质量管理体系进行产品质量过程控制, 更好的保证产品质量的稳定性。

- ◆Dimensions: 339x160x53.5mm
- ◆The maximum door width is 1300mm and the maximum door weight is 200kg.
- ◆The maximum Angle of door opening is 125 degrees, 90 degrees or 115 degrees can be selected for positioning.
- ◆Two speed adjustment to meet the requirements of different occasions closed door effect.
- ◆Built-in pressure reducing valve to prevent damage or oil leakage of floor spring caused by external strong pressure or strong wind.
- ◆Universal design, suitable for left, right hand and single and double door opening.
- ◆Hydraulic oil imported from the United States, to ensure that the temperature of minus 40
- ◆The floor spring core in the cement box can be adjusted up, down, left, right, front and rear, which is more convenient for installation and easier for construction.
- ◆The product is certified by Korea KSA and can be used more than 500,000 times.
- ◆According to ISO9001 international quality management system for product quality process control, to better ensure the stability of product quality.



## AB8500



- ◆外观尺寸: 292 x 134 x 53.5mm
- ◆适用于最大门扇宽度1300mm,最大承受门重为150kg。
- ◆门扇最大开启125度,可选择90度或115度定位。
- ◆二段速度调节,以满足不同场合要求的闭门效果。
- ◆内置减压阀,防止因外来强压或强风状态下闭门而造成的弹簧损坏或漏油。
- ◆通用型设计,适合左、右手及双向开启门扇。
- ◆采用美国进口液压油,保证零下40度气温下不会影响闭门速度。
- ◆水泥盒中弹簧芯可上、下、左、右、前、后调节安装时更加方便,更加容易施工。
- ◆产品通过韩国KSA认证, 保证使用次数达五十万次以上。
- ◆按照ISO9001国际质量管理体系进行产品质量过程控制, 更好的保证产品质量的稳定性。

- ◆Dimensions: 292 x 134 x 53.5mm
- ◆The maximum door width is 1300mm and the maximum door weight is 150kg.
- ◆The maximum Angle of door opening is 125 degrees, 90 degrees or 115 degrees can be selected for positioning.
- ◆Two speed adjustment to meet the requirements of different occasions closed door effect.
- ◆Built-in pressure reducing valve to prevent damage or oil leakage of floor spring caused by external strong pressure or strong wind.
- ◆Universal design, suitable for left, right hand and single and double door opening.
- ◆Hydraulic oil imported from the United States, to ensure that the temperature of minus 40
- ◆The floor spring core in the cement box can be adjusted up, down, left, right, front and rear, which is more convenient for installation and easier for construction.
- ◆The product is certified by Korea KSA and can be used more than 500,000 times.
- ◆According to ISO9001 international quality management system for product quality process control, to better ensure the stability of product quality.

型号	功能	重量
K-9500	90°、115° 消磁停止	130
K-8500	消磁自由	150
K-8500	左旋停止	150
K-8500	右旋停止	150



## AB8300

防水用+简便的速度调节

- ◆外观尺寸:292x134x53.5mm
- ◆适用于最大门扇高度1000mm, 最大承受门量为130kg.
- ◆门扇最大开启125度, 可选择90度或115度定位.
- ◆二段速度调节, 以满足不同场合要求的闭门效果.
- ◆开门力度更轻, 闭门速度更稳, 使用寿命更长.
- ◆内置减压阀, 防止因外来强压或强风状态下闭门而造成地弹簧损坏或漏油.
- ◆通用型设计, 适合左、右手及单双向开启门扇.
- ◆采用美国进口液压油, 保证零下40度气温下不会影响闭门速度.
- ◆水泥盒中地簧芯可上、下、左、右、调整, 后调节, 使安装时更加方便, 更加容易施工.
- ◆产品通过韩国KSA认证, 保证使用次数达五十万次以上.
- ◆按照ISO9001国际质量管理体系进行产品质量过程控制, 更好的保证产品质量的稳定性.

- ◆Dimensions: 292x134x53.5mm
- ◆The maximum door width is 1000mm and the maximum door weight is 130kg.
- ◆The maximum Angle of door opening is 125 degrees, 90 degrees or 115 degrees can be selected for positioning.
- ◆Two speed adjustment to meet the requirements of different occasions closed door effect.
- ◆The door opening force is lighter, the door closing speed is more stable, and the service life is longer.
- ◆Built-in pressure reducing valve to prevent damage or oil leakage of floor spring caused by external strong pressure or strong wind.
- ◆Universal design, suitable for left, right hand and single and double door opening.
- ◆Hydraulic oil imported from the United States, to ensure that the temperature of minus 40
- ◆The floor spring core in the cement box can be adjusted up, down, left, right, front and rear, which is more convenient for installation and easier for construction.
- ◆The product is certified by Korea KSA and can be used more than 500,000 times.
- ◆According to ISO9001 international quality management system for product quality process control, to better ensure the stability of product quality.



## AB6300

- ◆外观尺寸:292x133x52mm
- ◆适用于最大门扇高度950mm,最大承受门量为110kg.
- ◆门扇最大开启125度, 可选择90度或115度定位.
- ◆二段速度调节,以满足不同场合要求的闭门效果.
- ◆内置减压阀, 防止因外来强压或强风状态下闭门而造成地弹簧损坏或漏油.
- ◆通用型设计,适合左、右手及单双向开启门扇.
- ◆采用美国进口液压油, 保证零下40度气温下不会影响闭门速度.
- ◆水泥盒中地簧芯可上、下、左、右、前、后调节安装时更加方便, 更加容易施工.
- ◆产品通过韩国KSA认证,保证使用次数达五十万次以上.
- ◆按照ISO9001国际质量管理体系进行产品质量过程控制,更好的保证产品质量的稳定性.

- ◆Dimensions: 292x133x52mm
- ◆The maximum door width is 950mm and the maximum door weight is 110kg.
- ◆The maximum Angle of door opening is 125 degrees, 90 degrees or 115 degrees can be selected for positioning.
- ◆Two speed adjustment to meet the requirements of different occasions closed door effect.
- ◆Built-in pressure reducing valve to prevent damage or oil leakage of floor spring caused by external strong pressure or strong wind.
- ◆Universal design, suitable for left, right hand and single and double door opening.
- ◆Hydraulic oil imported from the United States, to ensure that the temperature of minus 40
- ◆The floor spring core in the cement box can be adjusted up, down, left, right, front and rear, which is more convenient for installation and easier for construction.
- ◆The product is certified by Korea KSA and can be used more than 500,000 times.
- ◆According to ISO9001 international quality management system for product quality process control, to better ensure the stability of product quality.

谢谢！  
Thank you!